

MULTIFUNCTIONAL DIGITAL COLOR SYSTEMS /  
MULTIFUNCTIONAL DIGITAL SYSTEMS

# MFP Management Guide

---

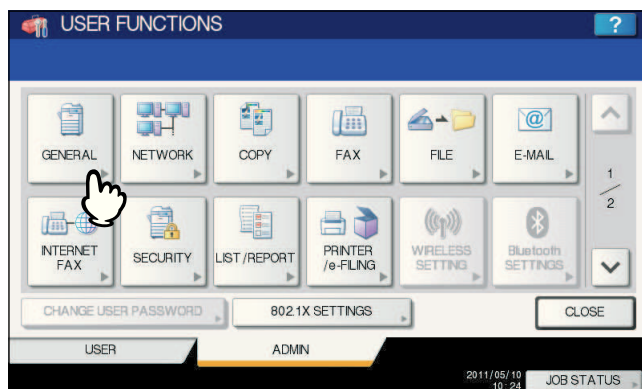
## ■ Updating your system

This menu allows you to update the system of the equipment by installing the updating configuration files.

### Tips

- To obtain the updating configuration files, contact your service technician.
- Before performing the operation, store the updating configuration files in the root directory of your USB storage device in advance.

### 1 Press [GENERAL] in the ADMIN menu (1/2).



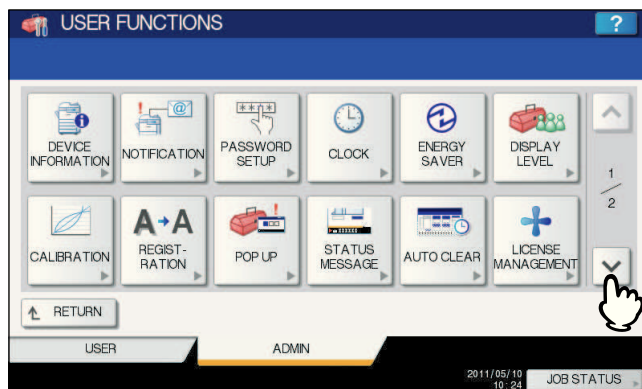
The GENERAL menu (1/2) is displayed.

### Tip

To display the ADMIN menu, see the following page:

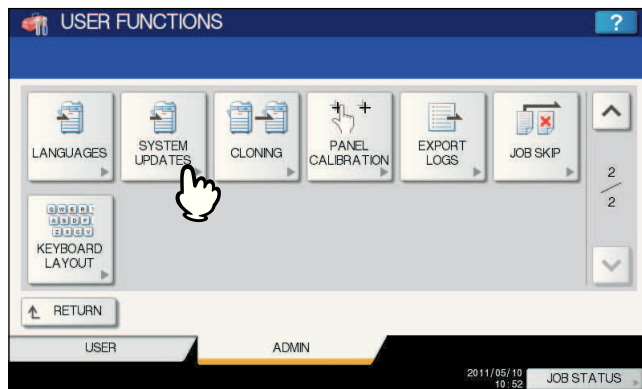
📖 P.75 "Entering Admin Menu"

### 2 Press ☐ on the GENERAL menu (1/2) screen.



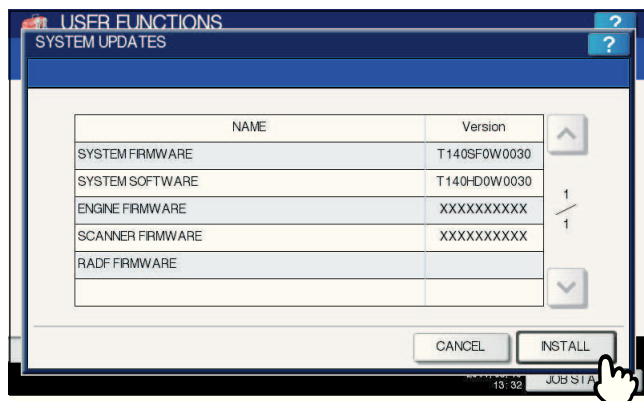
The GENERAL menu (2/2) is displayed.

### 3 Press [SYSTEM UPDATES].



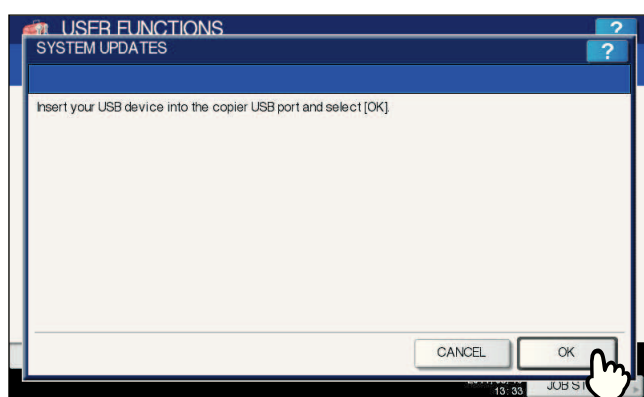
The SYSTEM UPDATES screen is displayed, and you can view the software currently installed and the respective versions.

## 4 Press [INSTALL].



A message appears prompting you to insert the USB media.

## 5 Connect your USB storage device in which the files for updating the system are stored to the USB port on the equipment, and [OK].

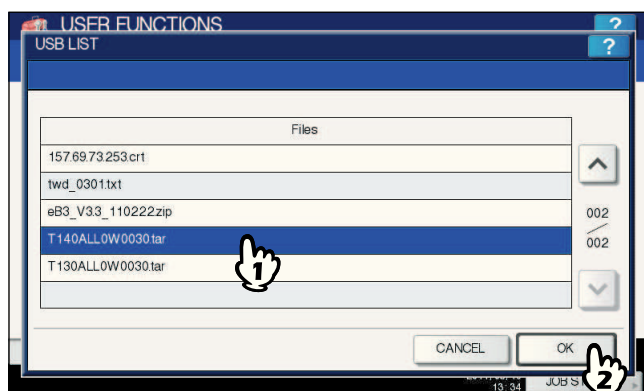


The USB LIST screen is displayed.

### Tip

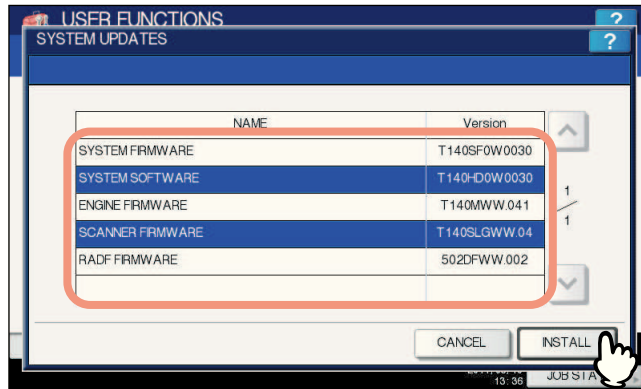
For the location of the USB port on the equipment, refer to the **Quick Start Guide “Chapter 1: PREPARATIONS”**.

## 6 Select the file type, and press [OK].



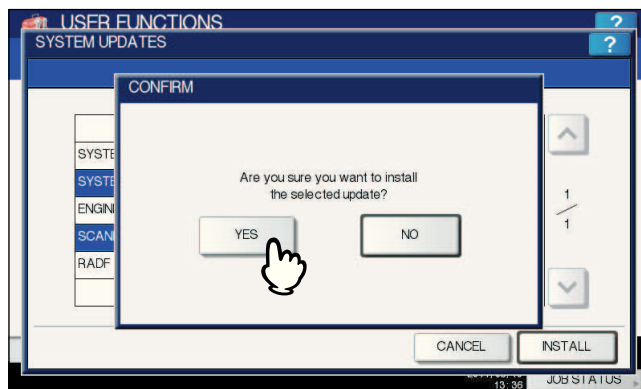
The SYSTEM UPDATES screen is displayed.

## 7 Select the file that you want to install, and press [INSTALL].



The installation confirmation screen is displayed.

## 8 Press [YES].

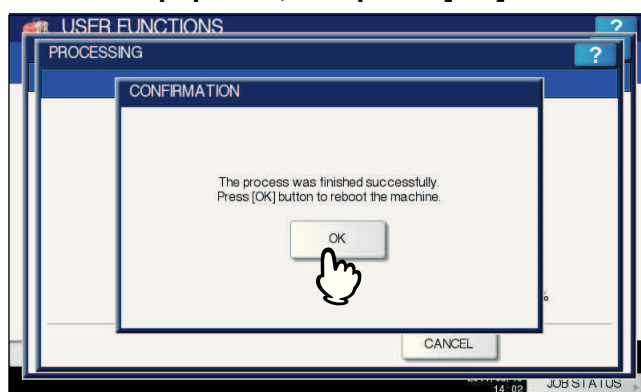


The installation begins.

### Notes

- Do not disconnect the USB storage device until the data transfer is complete. Removing the device while data are being transferred could destroy them or cause a malfunction of the equipment.
- When you press [YES] in the above screen while jobs are being processed, the message "Process cannot be performed while Job is processing or Admin function is in progress." will be displayed in the CAUTION screen. In this case, press [CLOSE], and wait until processing is complete, and then perform the installation again.

## 9 When the installation is complete, disconnect the USB storage device from the USB port on the equipment, and press [OK] to reboot the equipment.



Your system is now updated. When updating your system is complete, the equipment will be automatically rebooted.